

Viola

Monstrul de sub pat

Dan Byron

A

fff

4

7

B

f

11

f sub.

15

C

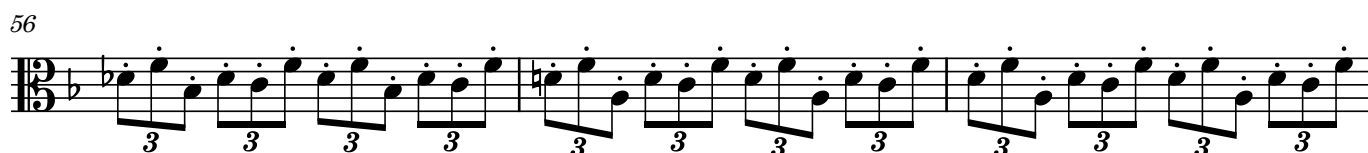
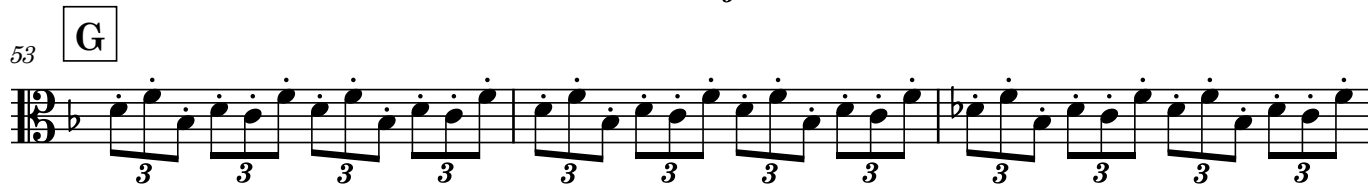
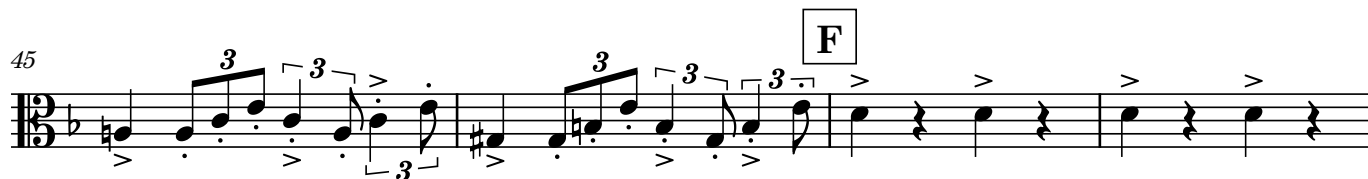
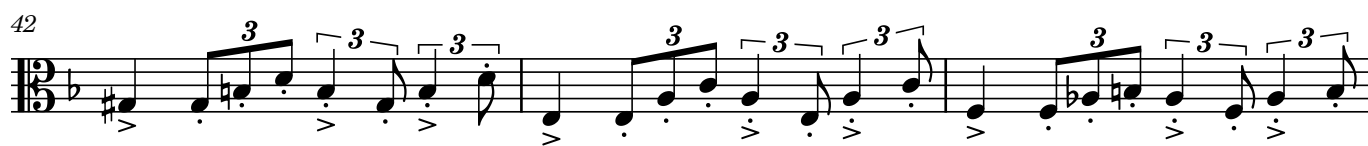
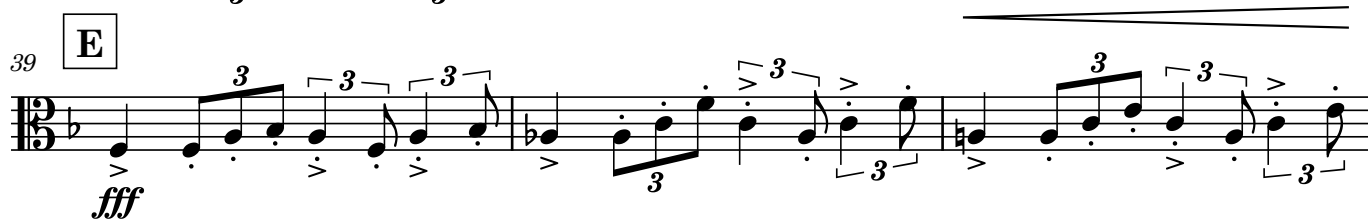
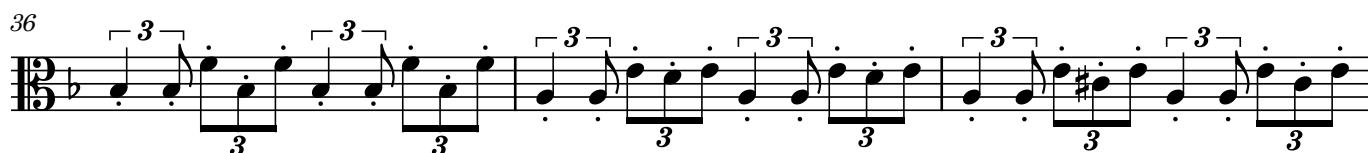
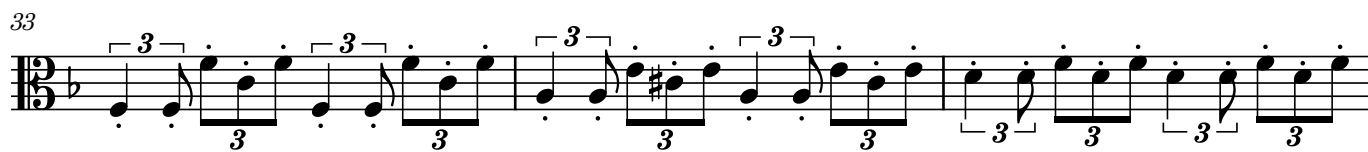
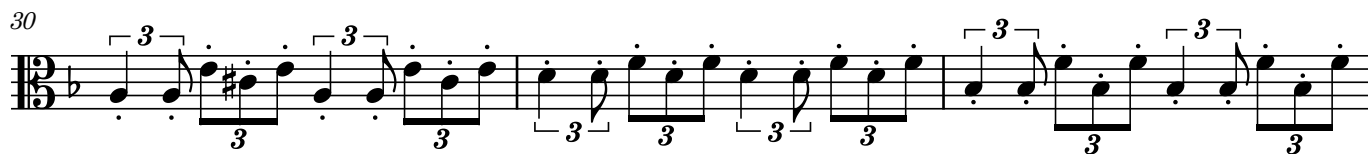
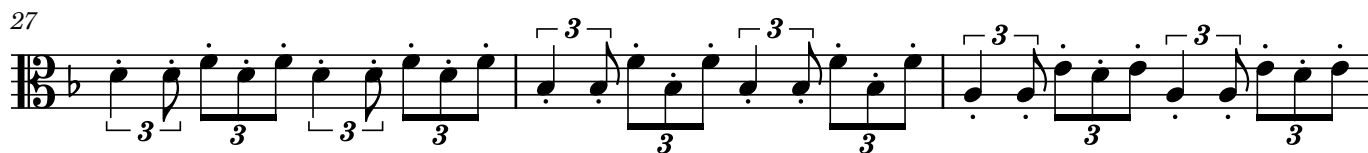
18

21

D

ff

24



59 **H**

2

ff

64

67

70

73

76 **I**

fff

80

86

92 **J**

mf

100

1

f

Detailed description of the musical score: The score is for a Viola part in a piece titled 'Monstrul de sub pat'. It begins at measure 59 with a key signature of one flat (B-flat) and a 12/8 time signature. The first staff (59-63) is marked with a '2' and a box 'H', and features a series of eighth-note triplets, with a 'ff' (fortissimo) dynamic marking. The second staff (64-66) continues the triplet pattern. The third staff (67-69) introduces some sixteenth-note triplets. The fourth staff (70-72) continues the triplet pattern. The fifth staff (73-75) continues the triplet pattern. The sixth staff (76-78) features a box 'I' and a 'fff' (fortississimo) dynamic marking. The seventh staff (80-82) continues the triplet pattern. The eighth staff (86-88) continues the triplet pattern. The ninth staff (92-94) features a box 'J' and a 'mf' (mezzo-forte) dynamic marking. The tenth staff (100-102) features a '1' marking and a 'f' (forte) dynamic marking.

107



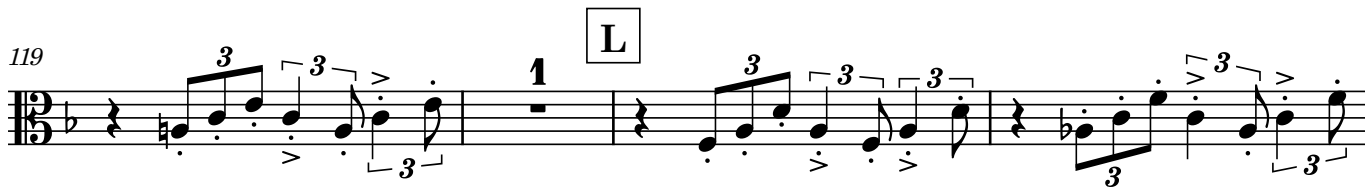
112



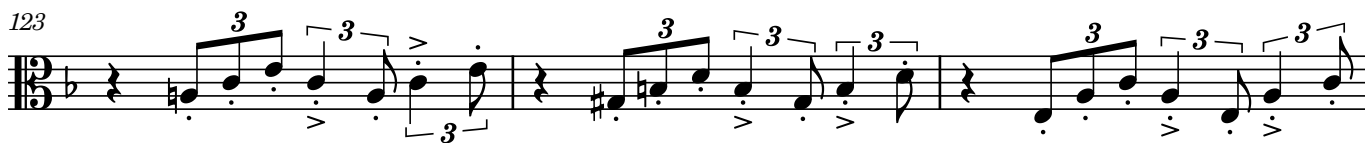
116



119



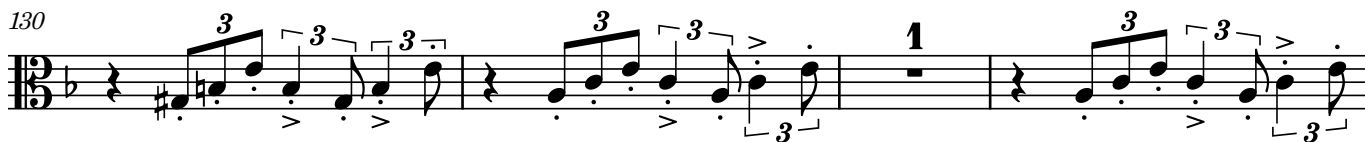
123



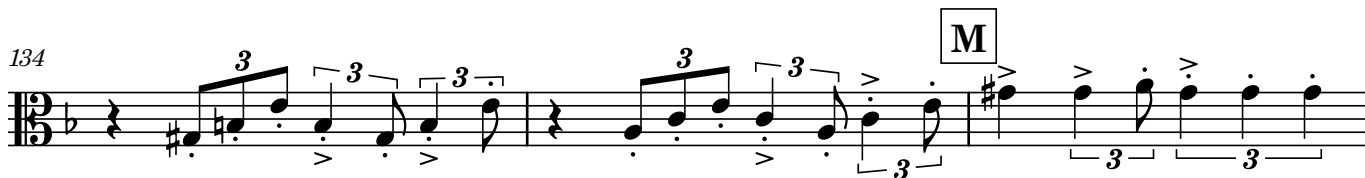
126



130



134



137

